



# Fruit Tree Care Calendar

See color images of problems on other side.

## Fruit Tree Care Calendar

Sept.	Oct.	Nov.	Dec.	Jan.	Feb.	Mar.	Apr.	May	Jun.	Jul.	Aug.
Fertilize <b>1</b>	<b>1</b>		Prune Fruit Trees <b>2</b>				Fertilize <b>1</b>			Prune Apricots <b>3</b>	
		Peach Leaf Curl & Disease Control <b>4</b>					Spray for Codling Moth <b>5</b>			Fertilize <b>1</b>	
				Set Codling Moth Traps <b>6</b>							
			Dormant Insect Control <b>7</b>			Peach Leaf Curl on Leaves <b>8</b>					
		Shothole Fungus <b>9</b> (Coryneum Blight)				Fireblight <b>10</b>		Spotted Wing Fruit Fly <b>11</b>			
					Brown Rot & Scab <b>12</b>			Summer Pruning <b>13</b>			
				Sunburn Protection				<b>14</b>			

1. Use **G & B Fruit Tree Fertilizer** in spring as new growth starts and in summer/fall after harvest.
2. Prune during late dormancy before new growth.
3. Last chance to prune Apricots is in late summer to avoid Eutypa dieback which spreads in winter.
4. For Peach Leaf Curl, apply **Monterey Liqui-Cop** after leaf drop, after pruning, and again as flower buds begin to crack open. To control powdery mildew and other diseases, spray once during dormancy. Spray the soil surface too if no underplantings.
5. Spray Apples and Pears with **Monterey Garden Insect Spray**. When moths appear in traps, spray 3 times, 10 days apart. Install new traps. If additional moths appear, spray 2 times 10 days apart (up to 2 weeks before harvest).
6. Set Codling Moth Traps in Apples and Pears before they are in full bloom.

7. Use **Monterey Horticultural Oil** once, to control over-wintering insects on bark.
8. Pick off curly leaves when possible, then spray **GrowMore Seaweed Extract** at 1 oz per gallon of water weekly until new growth comes in clean.
9. Spray Apricots, Cherries and other stone fruit with **Monterey Liqui-Cop** at leaf drop. Keep litter picked up around tree.
10. Spray Pears with **Monterey Liqui Cop** every 5 to 7 days during blooming. DO NOT use on D'Anjou, Comice, or Seckel. For apples, spray **Monterey Liqui-Cop** when buds are silvery but before most have turned green. Discontinue use when green-tip is 1/2 inch. Spray soil surface too if no underplantings. If disease appears in spring or summer, cut off 12" below blackened twigs.

11. For cherries, plums, and berries: set ISG Traps in order to time treatment properly. Apply **Monterey Garden Insect Spray** as fruit begins to turn from yellow to pink, about 2 to 3 weeks before cherry or berry harvest. Re-bait trap and continue to monitor. A second application may be needed 7 to 10 days later.
12. Spray during bloom with **Spectracide Immunox** at 7 to 14 day intervals.
13. Begin Summer pruning when thinning fruit sparing the fruiting wood and spurs. See "Backyard Orchard Culture Guide" for more info.
14. Paint trunks of newly planted fruit with **Frazee Tree Trunk White** to protect from sunburn and borers. Cherries are especially susceptible.

V. 3 2013

Adapted from UC Cooperative Extension Publication



#3 Eutypa Dieback on Apricot pruned in winter



#9 Shot Hole Fungus



#14 Brown Rot



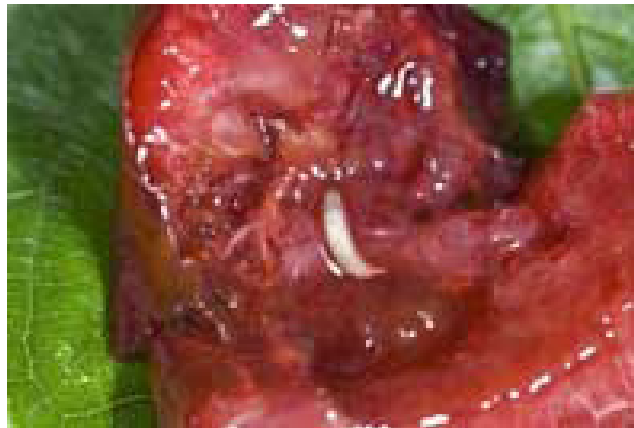
#4 and #8 Peach Leaf Curl



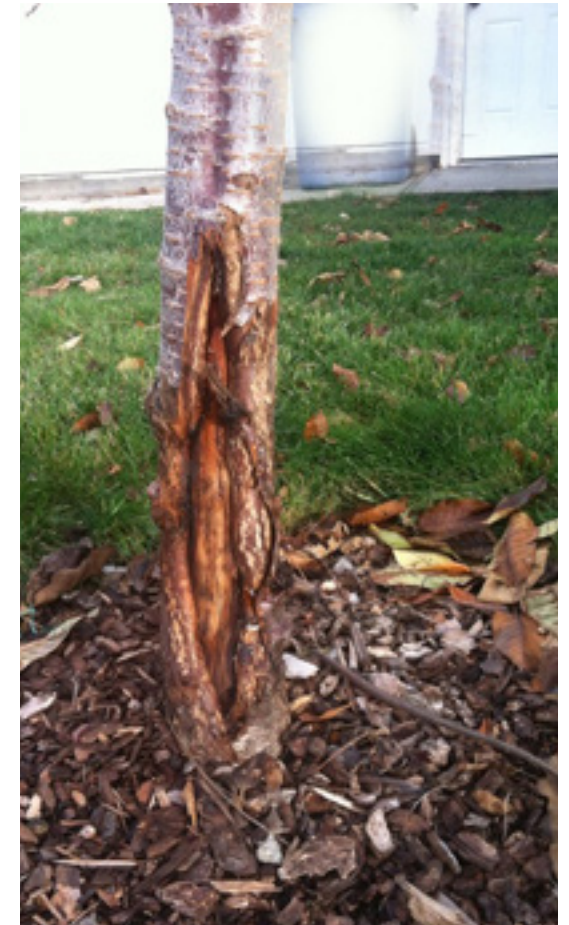
#10 Fireblight on Pear



#5 Codling Moth Damage



#11 Spotted Wing Fruit Fly Larva in Cherry



#14 Sunburn on Cherry trunk